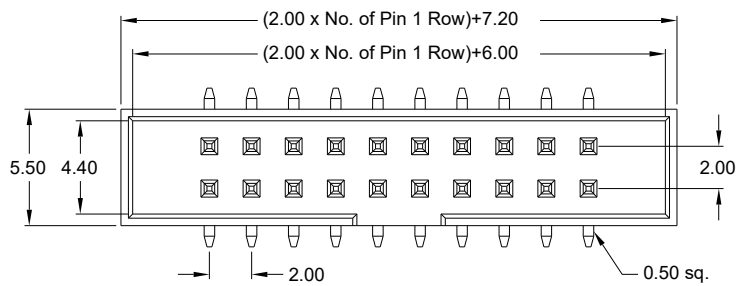


2.00mm pitch

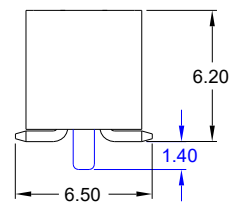
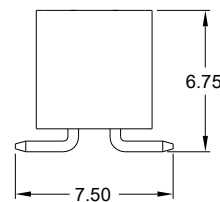
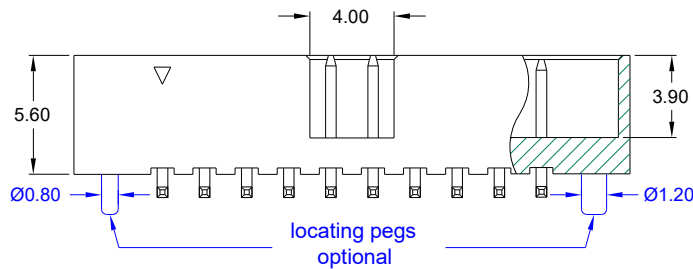
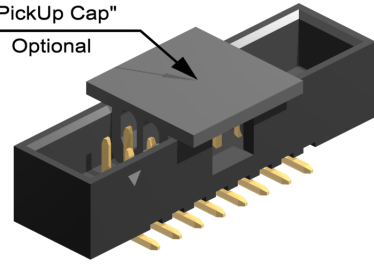
Box Header



- SMT -



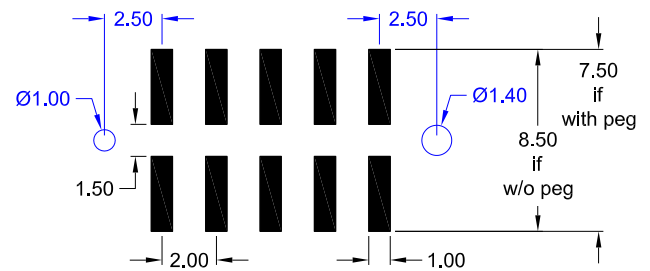
"PickUp Cap"  
Optional



### Application and Features

- **Standard:**  
**without locating pegs, Tray packing and without "PickUp Cap"**
- Also available "Reel" packing
- Designed to mate with IDC female connector IDS-xxx-X 200-95/P
- Reliable flat cable to PCB connection
- No ejection latches for space saving

### PCB Surface Mount Layout



### Specifications

Current rating	1 A
Insulation resistance	1000 MΩ min.
Withstanding voltage	500 V AC

Operating temperature	- 40°C to +105°C
Processing temperature	+250°C +0/-5°C for 5sec.
Contact material	(RoHS compliant) Copper Alloy
Insulator material	(RoHS compliant) PA6T UL 94 V-0

### How to order

SLS - xxx - H562 - 55/2 X

Nbr of pins	Plating	Options
<b>without "locating pegs"</b> <b>006 to 068</b> except: 038; 042; 046; 048; 052 054; 056; 058; 062; 066  <b>with "locating pegs"</b> <b>008 to 050</b>	<b>55</b> = Gold  other platings on request	<b>without "locating pegs"</b> <b>F</b> = Tray packing; with „PickUp Cap“ <b>T</b> = Tube packing; without „PickUp Cap“ <b>A</b> = Tube packing; with „PickUp Cap“ <b>B</b> = Reel packing; with „PickUp Cap“  <b>with "locating pegs"</b> <b>C</b> = Tube packing; without „PickUp Cap“ <b>D</b> = Tube packing; with „PickUp Cap“ <b>E</b> = Reel packing; with „PickUp Cap“